



804 North Mentzer  
Mitchell, SD 57301-2198

NON-PROFIT  
ORGANIZATION  
U.S. POSTAGE  
**PAID**  
MITCHELL, SD  
PERMIT NO. 71

# New Staff



**Karen Ahrenholz**  
Direct Support Professional  
McLeod House



**Diane Bryant**  
Direct Support Professional  
Park Place Apartments



**Aidith Campbell**  
Direct Support Professional  
Clarke House



**Morgan Crane**  
Direct Support Professional  
North Kimball House



**Vicki Hanson**  
Supervisor  
Centennial Apartments



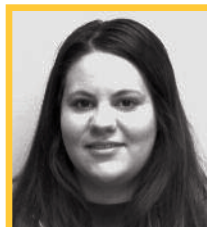
**Samantha Kubik**  
Direct Support Professional  
McLeod House



**Joseph Redder**  
Direct Support Professional  
Clarke House



**Kayleigh Sturgeon**  
Direct Support Professional  
Kj Program



**Tori Stewart**  
Direct Support Professional  
Career Connections



**Stephanie Swanson**  
Direct Support Professional  
Bartscher House



**Grace Varilek**  
Direct Support Professional  
Residential Program



**Kendra Watters**  
Direct Support Professional  
R&B House



**LifeQuest’s Mission**  
*Creating Opportunities That Enrich Lives*

LifeQuest rewrote its mission statement in 2006, creating a core purpose that we believe strongly in, and are guided by, each day that we provide supports to people who receive services from LifeQuest.

At a recent meeting, where representatives from different stakeholder groups were present, I was asked to talk about LifeQuest’s Mission Statement. In doing so, I mentioned that the Mission Statement was written with the intent to encompass all people, and not just those being served by LifeQuest. We believe that all people have the ability to give to the lives of each other, in turn, enriching the lives of others, in some way.

Through this discussion, we began to identify some real examples of how this was true and present every day. It might be an employer’s/ coworkers life who is enriched by employing someone with a disability, or a recipient of a volunteer effort supported by LifeQuest, or, what we found most valuable, by being a family member or friend. Whatever it is, all lives are enriched by having been a part of the experience.

The discussion that took place was valuable, as I believe that many of us walked away with a deeper understanding and appreciation of LifeQuest’s Mission Statement. There are opportunities every day that we all have, that in some way, can make someone life brighter. That is what we strive for as we carry out our Mission Statement. I hope your life has been enriched through our mission.

Pam Hanna  
 Executive Director

**LifeQuest Board of Directors**

Jeff Smith, President  
 Melanie Mullenmeister, Vice President  
 Joe Childs, Secretary/Treasurer

Carl Beckstrom  
 Tracy Christensen  
 Wyonne Kaemingk

Steve Morgan  
 Lyndon Overweg  
 Renee Robbins  
 Ken Stach

Abbie Titze  
 Mike Tobin  
 Steve Van Genderen

**LifeQuest Foundation Board of Directors**

Scott Kroger, President  
 Jan Quenzer, Vice President

Jason Bradley  
 Phil Collins

Trevor Dierks  
 Will Flett  
 Ron Muth

Jody Smith  
 Vicki Wiese

**Staff**  
**Anniversaries**

**JULY**

- Peggy Huber..... 13 years
- Lisa Anderson ..... 8 years
- Malea Boyer ..... 8 years
- Coleen Bernards ..... 7 years
- Elise Wibben ..... 5 years
- David Miller ..... 3 years
- Carly Berg ..... 2 years
- Gina Bultje ..... 2 years
- Matthew Fee ..... 2 years
- Theresa Wheeler..... 2 years
- Kaycee McGuire..... 1 year

**AUGUST**

- Pam Hanna..... 33 years
- Jane Palmquist ..... 20 years
- Denise Graves ..... 16 years
- Rebekah Nelson..... 16 years
- Pam Stransky ..... 14 years
- Melissa McMillan ..... 12 years
- Marla Voelker ..... 12 years
- Jessica Lang ..... 11 years
- Cindy Chance ..... 10 years
- Lasey Baldwin ..... 8 years
- Kaleena Kaderabek ..... 7 years
- Kayla Braun ..... 6 years
- Cindy Keiper ..... 6 years
- Liz Anderson..... 1 year

**SEPTEMBER**

- Carrie Tesch ..... 29 years
- Betty Visscher ..... 23 years
- Linda Powell ..... 22 years
- Julie Gregory ..... 20 years
- Kathy Pickner ..... 20 years
- Deb Bussmus ..... 13 years
- Katherine Breske ..... 11 years
- Carol Anderson ..... 10 years
- Julie Plooster ..... 10 years
- Wes Johnson ..... 9 years
- Jenny Kotrba ..... 7 years
- Ann Aalbers ..... 5 years
- Lacey Hanson ..... 4 years
- Theresa Thompson ..... 4 years
- Brittany Kaufmann ..... 3 years
- Mary Verzani ..... 2 years
- Connie Bush ..... 1 year
- Cate Diede ..... 1 year
- Jennifer Haddon ..... 1 year
- Emma Kelly ..... 1 year
- Natasha Stern ..... 1 year



## Lifequest Earns Four Year Accreditation

In May, consultants from The Council on Quality and Leadership (CQL) visited LifeQuest to conduct an accreditation review. At the end of the week, CQL awarded LifeQuest with a four-year accreditation, the longest time period an organization can earn. "We're thrilled with the visit," said Executive Director Pam Hanna. "The accreditation proves that we're a high quality organization with high quality people. We're glad we can offer such great services to the people we support."

Throughout the week, CQL consultants from New Mexico and Wisconsin met with people supported, staff members, family members and others to determine LifeQuest's strengths and areas of enhancement. The visit closed with a day-long process to determine the next steps for the organizations, receiving input from all LifeQuest stakeholders.

Many of the action plans generated by the weeklong process are in LifeQuest's Quality Enhancement Plan for 2017-2018. To see the Plan, see the article on Page 6.

## Building a Foundation with the ...



### Myths About Planned Giving

There are many myths associated with planned giving, estate gifts, wills and other vehicles to give significant contributions to the LifeQuest Foundation and other non-profit organizations.

**Myth:** You have to be rich to give a planned gift.

**Fact:** Only in spirit! Planned Gifts of only \$1,000 are common and are welcome. A planned gift is a personally sacrificial donation that is made for future use.

**Myth:** I do not have much – I do not need a will.

**Fact:** Regardless of any gift to the LifeQuest Foundation, we hope that you would draft a will. Proper planning will significantly lessen the time and burden your family will encounter to properly complete your estate wishes.

**Myth:** You want all of my money after I'm gone!

**Fact:** We're sure you have family, friends and other entities you want to help. In fact, think of your family first! The LifeQuest Foundation only wants what YOU think you want to provide to the LifeQuest Foundation.