



804 North Mentzer  
Mitchell, SD 57301-2198

NON-PROFIT  
ORGANIZATION  
U.S. POSTAGE  
**PAID**  
MITCHELL, SD  
PERMIT NO. 71

# New Staff



**Taylor Albertz**  
Direct Support Professional  
East Elm House



**Kade Cowins**  
Direct Support Professional  
Bartscher House



**Shalee DeVries**  
Direct Support Professional  
North Kimball House



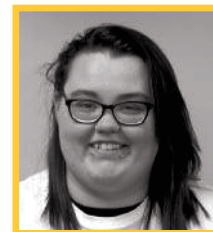
**Tiffany Fischgrabe**  
Direct Support Professional  
J & L House



**Angie Iburg**  
Direct Support Professional  
Park Place Apartments



**Morgan Lensing**  
Direct Support Professional  
McLeod House



**Jystice Rossiter**  
Direct Support Professional  
Radke & Blaalid Houses



**Kalla Sauvage**  
Direct Support Professional  
North Kimball House



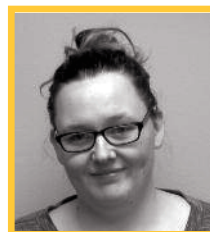
**Kennedy Schilling**  
Direct Support Professional  
East Elm House



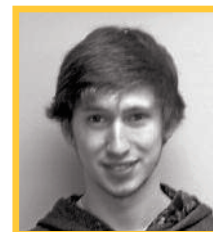
**Lee Sewright**  
Direct Support Professional  
Residential Program



**Tim Soderquist**  
Direct Support Professional  
J & L House



**Eliza Wagner**  
Direct Support Professional  
Gamble Street Apartments



**Arthur Westall**  
Direct Support Professional  
KJ Program



**Sam Wesseling**  
Direct Support Professional  
Centennial Apartments



### No Snow Days

April 13th and 14th brought with it an ice and snowstorm that interfered with the plans of many and slowed or halted the ability to travel about as we are accustomed to doing. As the storm became inevitable, many hustled to the store for what was needed to spend a few days at home - away from work - without the worry of having to brave the storm and in the presence of comfort food.

At LifeQuest, we are forever grateful for the support staff that do brave the storm and show up to work, because we never close for a "snow day". There are several people who count on us every day, no matter what the weather is outside, so the dedicated support staff bundle up, walk out into the storm, and go to work. They know people are counting on them and that they are needed. It's not an obligation, it's a demonstration of their commitment to the people who trust them to be there.

Thank you to all of the support staff who brave the wind and cold, walk through the drifts of snow and are present to provide people with the comfort and security they need to weather the storm, whether it was the most recent, those that have passed or those yet to come.

LifeQuest is built on the strength of those who carry out its mission, vision and values each day. Whether it's a snow storm or a typical day, the support staff continue to be the foundation to which best supports are built from.

Pam Hanna  
Executive Director

### LifeQuest Board of Directors

Jeff Smith, President  
Melanie Mullenmeister, Vice President  
Joe Childs, Secretary/Treasurer

Carl Beckstrom  
Tracy Christensen  
Wyonne Kaemingk

Steve Morgan  
Lyndon Overweg  
Renee Robbins  
Ken Stach

Abbie Titze  
Mike Tobin  
Steve Van Genderen

### LifeQuest Foundation Board of Directors

Jan Quenzer, President  
Trevor Dierks, Vice President

Jason Bradley  
Will Flett

Scott Kroger  
Ron Muth  
Jody Smith

Kristy Szabo  
Vicki Wiese

## Staff Anniversaries

### APRIL

- Leonard Heckel . . . . . 38 years
- Carol Schoenfelder . . . . . 31 years
- Sharon Stern . . . . . 22 years
- Sheri VanOverschelde . . 21 years
- Carol Limberg . . . . . 18 years
- Nikki Riggs . . . . . 17 years
- Sharyl Burmeister . . . . 16 years
- Gregg Judstra . . . . . 15 years
- Paula Pecenka . . . . . 9 years
- Michelle Brown . . . . . 9 years
- Emily Pogue . . . . . 5 years
- Skyler Wittenhagen . . . . 3 years
- Joseph Redder . . . . . 1 year

### MAY

- Tyra Fleury . . . . . 19 years
- Ronda Vetch . . . . . 18 years
- Kylee Burdick . . . . . 6 years
- Amy Hotchkiss . . . . . 6 years
- Kendra Johnson . . . . . 3 years
- Rachel Selland . . . . . 2 years
- Bill Swaney . . . . . 2 years
- Vicki Hansen . . . . . 1 year
- Tori Stewart . . . . . 1 year
- Kendra Watters . . . . . 1 year

### JUNE

- Lynette Kingsbury . . . . 23 years
- Roxi Brown . . . . . 22 years
- Lisa Gorrell . . . . . 22 years
- Gary Lambert . . . . . 22 years
- Kacee Regan . . . . . 22 years
- Stacy Johnson . . . . . 10 years
- Heather Keiper . . . . . 9 years
- Janelle Parker . . . . . 5 years
- Kate Miller . . . . . 3 years
- Larry Moeller . . . . . 3 years
- April Olson . . . . . 3 years
- Allen Palmer . . . . . 3 years
- Kristy Ackman . . . . . 2 years
- Sophie Beauchamp . . . . 2 years
- Zoey Bornhorst . . . . . 2 years
- Courtney Graves . . . . . 2 years
- Morgan Crain . . . . . 1 year
- Samantha Kubik . . . . . 1 year
- Stephanie Swanson . . . . 1 year

## *Building a Foundation with...* LifeQuest Foundation

### Challenge Gift Completed

A generous donor matched the first \$10,000 of new and increased gifts given to the LifeQuest Foundation Annual Campaign that began in March. All told, over 80 donors increased their existing gift, or gave a brand new gift, resulting in over \$10,000 in new gifts to the Foundation.

“We’re very thankful to this donor who has stepped up and offered this challenge,” said LifeQuest Executive Director Pam Hanna. This is the eighth year in a row that the LifeQuest Foundation reached its goal of \$10,000 or more in new and increased gifts during the Spring Campaign.

### Give a Planned Gift Through Your Will (Bequests)

Donors may give a gift to the LifeQuest Foundation, upon their death, through their Last Will and Testament, called a bequest. Bequests are simple and revocable, meaning that you can change your gifts at any time.

#### Features...

Bequests are flexible and can be given in a variety of ways. You may give a **specific** gift, which is stated as a **specific** dollar amount. A percentage gift provides a donation equal to a stated percentage of your total assets. A **remainder** gift provides a donation based on a percentage (or stated amount) of your assets after any specific gifts you wish to make to others. This is different than a percentage gift because this gift is made after any stated bequests (such as the previous two) are made.

#### Benefits...

1. **It is not payable until death** – it does not affect your cash flow or assets during your lifetime.
2. **It is revocable** – you can change or remove this gift at any time.
3. **It is forever** – at your request, the LifeQuest Foundation will only use interest earned from your gift towards LifeQuest programs, unless noted otherwise.
4. **It is private** – your will is not filed or made public until your death, unless you decide otherwise.
5. **It is valuable** – a bequest is a planned gift...no matter the size.

#### **Already completed your will?**

A bequest to the LifeQuest Foundation is as easy as adding a codicil to your will. A codicil is an official document where you can make amendments or changes to your will without the added expense of re-writing your entire will. A codicil uses straightforward language to suit your needs. Contact your estate professional or call the Brian Loken, the LifeQuest Foundation’s Development Director at (605) 990-7835 to request codicil documents.