



804 North Mentzer
Mitchell, SD 57301-2198

NON-PROFIT
ORGANIZATION
U.S. POSTAGE
PAID
MITCHELL, SD
PERMIT NO. 71

New Staff



Taryn DeBoer
Direct Support Professional
East Elm Apartments



Jill Eckmann
Direct Support Professional
Park Place Apartments



Wendy Eich
Direct Support Professional
R&B House



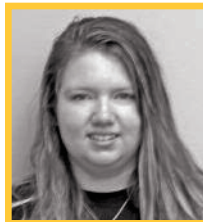
Laryssa Erickson
Direct Support Professional
Wheatridge Apartments



Laurel Friedenbach
Direct Support Professional
Gamble Steet Apartments



Donna Gronke
Direct Support Professional
Wheatridge Apartments



Carolyn Groves
Direct Support Professional
Gamble Street Apatments



Melody Melchior
Employment Specialist
Career Connections



Mack Minder
Direct Support Professional
KJ Program



Diane Reed
Direct Support Professional
McLeod House



Rodney Rorex
Direct Support Professional
Gamble Street & Centennial



Savannah Schroeder
Direct Support Professional
North Kimball Apartments



Daniel Sloan
Direct Support Professional
Clarke House



Tara Thill
Direct Support Professional
East Elm Apartments



Maggie Zeimer
Direct Support Professional
Clarke House



It's More than a Job

One of the ways in which LifeQuest works to fulfill its mission is to assist people to find and maintain employment that they enjoy, find meaningful and can be successful at. Employment is a big part of many of our lives, but not just because it's "how we earn money/make a living," it's also because of what it brings to our lives.

October is National Disabilities Employment Awareness Month. LifeQuest is fortunate to exist in a community that believes in the possibilities of those with diverse abilities. Many businesses and community members demonstrate that each year by hiring/employing someone with a disability. Not only does it provide people with a place of employment, but it also affords them the opportunity to engage in meaningful work, demonstrate their skills and abilities and to develop relationships with coworkers. Equally as important, it provides them with a sense of accomplishment and pride knowing that they are contributing members of the community, in which they are a part of. LifeQuest has assisted many people to find and maintain employment in the community through Career Connections and its Job Development Program. Many community businesses have partnered with LifeQuest to help find employees who are dependable, and have or can develop the skills needed for the job they are seeking to fill. If you are business owner, or someone who has employment opportunities, and want to learn more about Career Connections or LifeQuest's Job Development Program, please give Darla a call at 996-9891.

Pam Hanna
Executive Director

LifeQuest Board of Directors

Jeff Smith, President
Melanie Mullenmeister, Vice President
Joe Childs, Secretary/Treasurer

Carl Beckstrom
Tracy Christensen
Wyonne Kaemingk

Steve Morgan
Lyndon Overweg
Renee Robbins
Ken Stach

Abbie Titze
Mike Tobin
Steve Van Genderen

LifeQuest Foundation Board of Directors

Jan Quenzer, President
Trevor Dierks, Vice President

Jason Bradley
Will Flett

Scott Kroger
Ron Muth
Jody Smith

Kristy Szabo
Vicki Wiese

**Staff
Anniversaries**

OCTOBER

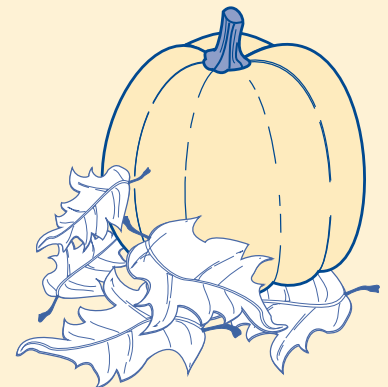
- Lonnie Callies 24 years
- Kenny Gunsch 22 years
- Holly Fechner 12 years
- Jean Scherschligt 11 years
- Kim Luna..... 3 years
- Kylie Roth 2 years
- Jordan Unterbrunner.... 1 year

NOVEMBER

- Mike Sejnoha 31 years
- Jeannie Johnson 27 years
- Brian Loken 16 years
- Vicki Stubbe 11 years
- Cindy Bunch 9 years
- Ardis Hintz 4 years
- Elaine Kinney 3 years
- Jill Beaton..... 2 years
- Becky Haslam 2 years
- Brittany Ochs 2 years
- Dianne Wright 2 years
- Missy Gabriel Chilel 1 year
- Miranda Letcher..... 1 year
- Scott Mahoney..... 1 year

DECEMBER

- Deb Brink..... 39 years
- Avis Bahm 23 years
- Monica Konechne..... 14 years
- Sherry Feistner..... 11 years
- Linda Geidel 1 year
- Kim Hoffman..... 1 year
- Sonya Johnson..... 1 year



Bella's Walk a Success

Over 50 athletes and dozens of volunteers braved the rain on September 9 for this year's Bella 5K Color Fun Run/Walk. The event started at Bella's Butterfly Garden at Northridge Park in Mitchell and featured multiple paint stations throughout the course. Proceeds from the event benefitted both LifeQuest and victims of drunk driving accidents.

"Thank you all who spent your Saturday at Bella's 5K," said Jeanie Morgan, mother of Bella and LifeQuest Supervisor. "I am so thankful for my LifeQuest family and proud to work for such an amazing organization. You all made Bella's 5K amazing and colorful!"

The event raised \$2,500 for LifeQuest, and earmarked for staff investments. Thanks to all who ran, walked or volunteered!



Bella's Color 5K Run/Walk benefitted LifeQuest.

Support LifeQuest through Amazon Smile



By visiting smile.amazon.com and selecting LifeQuest Foundation as your charity of support, a portion of the proceeds from everything you purchase from Amazon will be given back to LifeQuest.

"The best part is that you only have to log in the first time and select LifeQuest Foundation once," said Loken. "Each time you visit smile.amazon.com after that, it will show you supporting the LifeQuest Foundation by name."

To support LifeQuest, do the following:

- 1) Type smile.amazon.com in the address bar of your web browser.
- 2) Log in using your amazon.com account. Everything else is the same, including Prime.
- 3) Amazon will ask you to pick your own charitable organization. Type LifeQuest Foundation in search box and press "Search"
- 4) If multiple entries are listed, press select next to Mitchell, SD.

Remember to visit <http://smile.amazon.com> each time! It should say LifeQuest Foundation under the search bar every time you visit the site.



In Loving Memory

Leon Bettelyoun ~ 1973 – 2017

Leon passed away on October 5th in a hospice care facility in Vermillion, SD. Leon loved his home at Gamble Street Apartments since moving to Mitchell in 1996. He was a gentle spirit with a great sense of humor. He was very easy going and liked by everyone.

"I really didn't learn to appreciate who Leon was until I started working at GSA. I mean I knew who he was, but didn't have a clue who he was as a person. He was sweet and didn't have an enemy in the world. Knowing him truly blessed my life."

- Linda Powell